



**NEW ZEALAND
MOUNTAIN SAFETY COUNCIL
ANNUAL REPORT**

2010-2011



OUTDOOR SAFETY
NEW ZEALAND MOUNTAIN
SAFETY COUNCIL

**DISCOVER
MORE, SAFELY.▲**



THE NEW ZEALAND MOUNTAIN SAFETY COUNCIL

The New Zealand Mountain Safety Council (MSC) is a national organisation and incorporated society with a mandate from our member organisations to encourage safe participation in land based outdoor activities.

The organisation operates from the high tide mark to the peak of Aoraki/Mount Cook and is principally focused on abseil techniques, alpine skills, avalanche awareness, bushcraft (walking, camping, tramping and survival), firearms safety, outdoor and workplace first aid, outdoor safety, risk management and river safety.

The Council currently consists of 25 Member Organisations and 1 Associate Member organisation with a vested interest in safety, including Government agencies, national youth organisations and industry associations; an Executive Committee whose role is to provide governance; a National Office with full and part-time staff; a number of technical advisory and standing committees as well as 28 regional branches supporting more than 1500 instructors.

For further information, visit www.mountainsafety.org.nz

OUR MISSION IS TO:

- ▲ Enable people to enjoy their recreation safely in the outdoors.
- ▲ Foster positive community support for outdoor safety.
- ▲ Promote the development and maintenance of national outdoor safety standards for land-based activities.

OUR GOALS:

- ▲ Increased number of leaders/teachers/ instructors/guides are inspired, inspiring, competent and retained as leaders.
- ▲ Groups and Clubs effectively promote and deliver increased safety in the outdoors.
- ▲ Commercial operators operate safely.
- ▲ The community is more aware of outdoor safety.
- ▲ MSC is financially strong.

As I reflect on the last year for MSC, I am encouraged by the support shown by our members, and the wider community, in what has been a year of difficulty for all parts of the New Zealand community. The Council has not been without its own challenges. Some of these are past us now, with others there is still much work to do.

Tough economic times challenge organisations to review every aspect of their operation and in doing so, grow and reassess direction; so it is for the Mountain Safety Council (MSC).

Costs have been reduced, work programmes have been reassessed, but most importantly, MSC's very 'reason for being' has been brought into sharp relief.

Financial restraints come with a cost; in delivery of the safety message, but there are also the gains associated by allowing us to focus on where MSC is now, and where we want to be in the future.

The Executive has, over the last year, worked to develop a Strategic Plan to cover the next stage in our growth. This is in a format ready for adoption in October.

We identified that we will remain relevant in a changing world, we will continue to support the community volunteer network, and continue to be a well respected and effective outdoor organisation.

Over the last year MSC has worked to strengthen the working relationships with a number of strategic partners. We have contributed to the Department of Labour Review into Adventure Tourism, through our many member agencies, and in our own right. We have worked in proactive Outdoor Safety messaging with both Government and other organisations. We have sought feedback to see how we may better work with others.

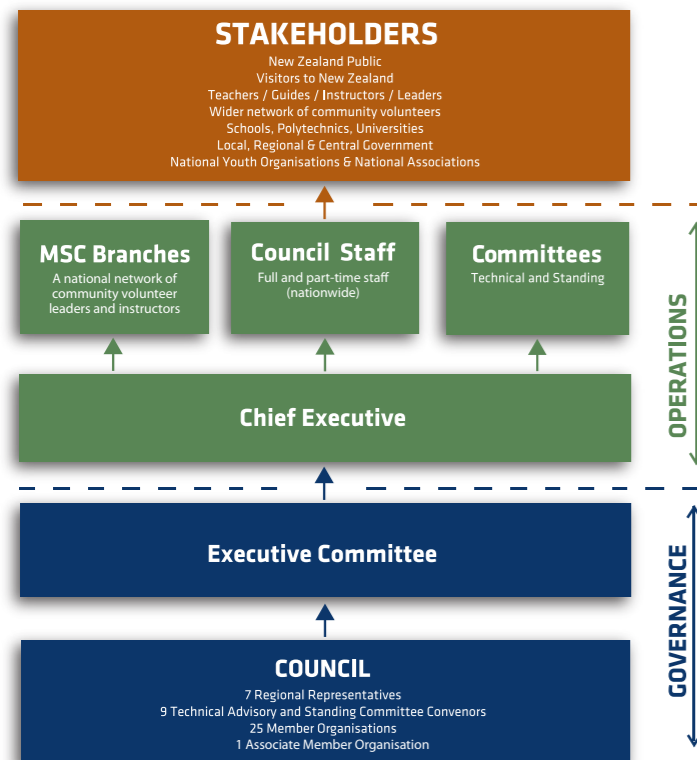
If the safety message opportunity to "Discover more, safely" is to reach the wider community, it is through ongoing relationships with volunteers, member agencies, funders and Government.

MSC wishes to thank you for the good work already done, but to also seek support going forward.

Ross Meder
Chairperson
June 2011



OUR STRUCTURE



MEMBER ORGANISATIONS

- ▲ Accident Compensation Corporation (ACC)
- ▲ The Boys' Brigade New Zealand
- ▲ Department of Conservation (DOC)
- ▲ Department of Labour - Workplace
- ▲ Duke of Edinburgh's Hillary Award
- ▲ Education Outdoors New Zealand (EONZ)
- ▲ Federated Mountain Clubs (FMC)
- ▲ Girls' Brigade New Zealand
- ▲ Girl Guiding New Zealand
- ▲ Heliski Operators New Zealand
- ▲ Land Search and Rescue New Zealand (LandSAR)
- ▲ New Zealand Alpine Club (NZAC)
- ▲ New Zealand Cadet Forces
- ▲ New Zealand Deerstalkers' Association (NZDA)
- ▲ New Zealand Defence Force (NZDF)
- ▲ New Zealand Mountain Guides Association (NZMGA)
- ▲ New Zealand Mountain Radio Service
- ▲ New Zealand Search and Rescue (NZSAR)
- ▲ New Zealand Outdoor Instructors Association (NZOIA)
- ▲ New Zealand Police
- ▲ New Zealand Shooting Federation
- ▲ New Zealand Snowsports Council
- ▲ New Zealand Sports Industry Association (NZSIA)
- ▲ Scouting New Zealand
- ▲ Tourism Industry Association New Zealand (TIANZ)

ASSOCIATE MEMBER ORGANISATIONS

- ▲ Search and Rescue Institute New Zealand (SARINZ)

CEO'S REPORT | DARRYL CARPENTER

Throughout 2010/2011 New Zealand faced many challenges created by the instability in global financial markets and the impact and aftershocks from the Christchurch earthquakes. We have also witnessed extraordinary acts of community spirit and the ability to rise to the challenges that this environment has presented our organisation at all levels.

The roller-coaster ride of challenge mixed with opportunity mirrors MSC experience in previous years and sustainable funding continues to provide the biggest challenge.

Despite this we achieved our business within budget. Last minute funding success for the snow and avalanche safety management programme put pressure on our ability to deliver to wider organisational expectations, however significant ground work has been progressed.

Lack of actual cash funding for the Transformation Project resulted in less achievement and consequently less direct support for the national network of community volunteer instructors, branches and resource development than was anticipated, but we are now poised to move forward quickly.

Despite this, we were able to maintain our critical outdoor safety delivery functions, capability and capacity and have made some significant contributions to outdoor safety within New Zealand.

At a delivery level one of our significant contributions is that our national network of passionate and committed community volunteer instructors continued to provide outdoor safety public education and train-the-trainer activity for national youth organisations.

Within the avalanche and alpine domain, the rebuild of the www.avalanche.net.nz website was successful and we hosted the Southern Hemisphere avalanche workshops and conference.

We successfully collaborated with NZ Police and Iwi in the establishment of the Whakatūpato firearms safety programme targeting rural Maori.

Our public safety messaging has been at the forefront of our delivery with the Outdoors Intentions project and www.adventuresmart.org.nz projects successfully delivered in collaboration with New Zealand search and rescue agencies.

Our thanks to LGB, NZ Police, DOC, SAR Council and SPARC for their continued support and investment.

We will continue to 'enable people to participate safely in land based outdoor activities' and my thanks to all those who have generously given their time, expertise and commitment to achieving that.

Darryl Carpenter
Chief Executive of MSC
June 2011

KEY ACHIEVEMENTS

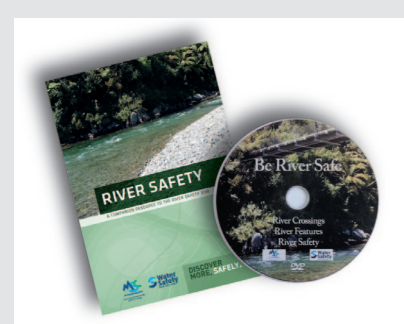
The New Zealand Mountain Safety Council has delivered a number of significant achievements in the last 12 months which contribute to our overall goal of 'more people participating safely in land based outdoor activity.'



Print and promotional material for the Southern Hemisphere Avalanche Conference 2011

AVALANCHE & ALPINE

- ▲ Successful Southern Hemisphere Avalanche Conference and workshops held with record attendance from the sector.
- ▲ Redesigned www.avalanche.net.nz website with enhanced avalanche advisory information on a daily basis.
- ▲ Redeveloped the information sharing tool (INFO-EX) for the snow and ski industry.
- ▲ Improved funding arrangements confirmed across all aspects of the sector.
- ▲ Represented NZ at the International Snow Science workshop in California.



The River Safety DVD and companion handbook.

BUSHCRAFT

- ▲ Completion and release of the River Safety DVD and companion handbook.
- ▲ Bushcraft manual reviewed and reprinted.
- ▲ Successful Regional Training held in Southland and Northland.
- ▲ Continued development of NZ Cadet Forces block course.

GOVERNANCE & MANAGEMENT

- ▲ Achieved budget.
- ▲ Secured funding from LGB, NZ Police, DOC & SPARC.
- ▲ Attended governance development via SPARC's Organisational Development Tool.
- ▲ Developed a new strategic plan and used the planning process to further engage with the outdoor sector.
- ▲ Commissioned a stakeholders survey and implemented the findings and recommendations.

FIRST AID

- ▲ Clarification of the Outdoor First Aid instructor pathway requirements.
- ▲ Regional revalidation opportunities for instructors were provided.
- ▲ One third of MSC First Aid instructors were certified by Whitireia Polytechnic and received their certificate in Outdoor Leadership First Aid Instructor.

FIREARMS & HUNTS

- ▲ An increased number of people attended firearms safety lectures.
- ▲ The Whakatūpato firearms safety programme was successfully piloted and launched with 12 courses delivered to more than 300 participants and 5 Whakatūpato instructors recruited.
- ▲ More than 210 hours of firearms safety messaging was delivered to 1415 participants from schools and community groups throughout NZ.
- ▲ Achieved international recognition and MSC's expertise was sought by Australian firearms safety organisations.
- ▲ HUNTS instructor recruitment remains strong with 30 qualified HUNTS instructors on board and 13 further individuals on the instructor pathway.
- ▲ The number of volunteer firearms instructors was maintained, despite increasing pressure on volunteers.

"I feel I've been equipped with some good skills and some basic confidence. Also feeling very inspired!"

▲ Participant on MSC Alpine Course

RISK MANAGEMENT

- ▲ NZ Cadet Forces becoming increasingly autonomous in risk management delivery.
- ▲ Informative external evaluation review of Risk Management delivery.
- ▲ Preparation for the risk management programme review.

COMMUNITY VOLUNTEER LEADER DEVELOPMENT

- ▲ Worked with Skills Active and NZOIA to increase opportunities for development of community outdoor leaders.
- ▲ Collaborated with Scouts, DoE (Hillary Award) and Girl Guides to offer quality outdoor leader training.
- ▲ Facilitated the developing national scheme of community outdoor leader community development.

"Awesome Instructors, positive as!"

▲ MSC Alpine Course participant

OUTDOOR SAFETY ADVICE

- ▲ Supported the DoL review and recommendations implementation.
- ▲ Advised standards in NZ in the development of ISO standards in tourism.
- ▲ Supported NZ Search and Rescue and attended SAR consultative committee meetings.
- ▲ Advised SPARC on community outdoor leader development.

TRANSFORMATION PROJECT

- ▲ Funding initiatives to support significant parts of the project achieved.
- ▲ 256 members completed and awarded Whitireia Polytechnic Certificates in Instructor Pathway Qualifications.
- ▲ 176 members awarded National Certificate in Outdoor Recreation (Leadership) Qualification in Bush Walking Leader Strand L3.
- ▲ 48 members awarded National Certificate in Outdoor Recreation Level 4.
- ▲ Education and OFA Advisory Committees re-established.

ABSEIL

- ▲ Demand for abseil training has increased signalling the value of the MSC programme.
- ▲ Continued to develop the Abseil instructor training pathway, from trainee to assessor.
- ▲ Implementing a review of current resources to support the Abseil programme.

MARKETING & COMMUNICATIONS

- ▲ 249 media appearances (Press, Radio & TV).
- ▲ 86,149 items of promotional collateral with safety message distributed.
- ▲ OnTrack newsletter created and distributed to members and stakeholders 3 times per year.
- ▲ Continued review and creation of MSC promotional material.
- ▲ Production of written material, ODS messages and resources brought back in-house.
- ▲ Communications plan in place to prioritise and deliver agreed outcomes.

RESEARCH & EVALUATION

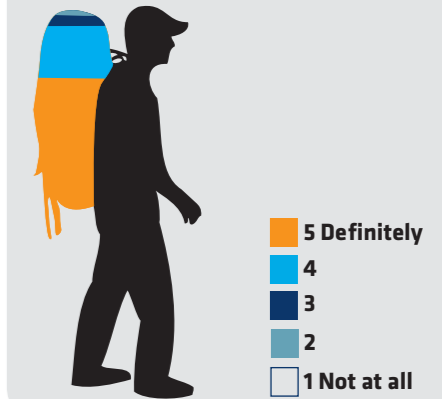
- ▲ Continued development of MSC Outcomes Model enables the organisation to clearly state its intended outcomes, prioritise projects and map the organisations progress towards achieving the outcomes.
- ▲ Delivered three external evaluation reports on MSC outcomes.
- ▲ Increased communication of relevant research and evaluation findings to our member organisations and volunteers.
- ▲ Raised the profile of MSC research and evaluation role within the wider recreation research fraternity and enlisted support for our research function.
- ▲ Produced and supported a number of research projects.

"I will be a lot safer now"

▲ Firearms Safety Training participant

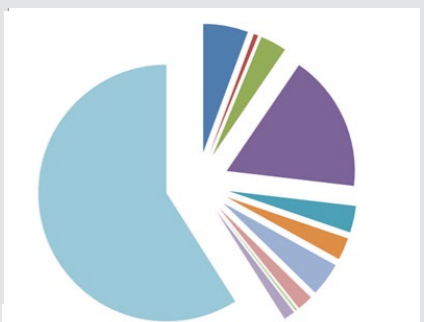
Will this course make a difference to how you prepare for and act in the outdoor environment?

▲ MSC Course feedback forms from May-July



Percentage of Participation By Activity

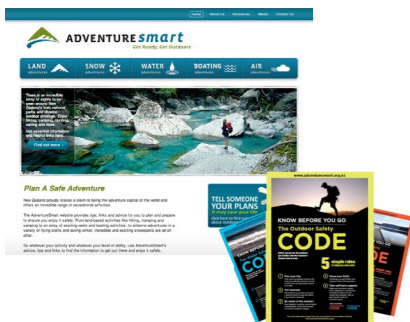
In 2010 - 2011 MSC had 16,702 participants involved in various programme activity. The graphic below illustrates the activities that people were involved in.



- ▲ Abseil
- ▲ Alpine
- ▲ Avalanche
- ▲ Bushcraft
- ▲ Firearms and Whakatūpato
- ▲ HUNTS
- ▲ Outdoor Leader Training
- ▲ Outdoor First Aid
- ▲ River Safety
- ▲ Range Officer
- ▲ Risk Management

COLLABORATIVE PROJECTS

VISITOR RISK MANAGEMENT PROGRAMME



- ▲ This extensive project draws together a number of organisations and projects under the one umbrella title.
- ▲ These projects include the production, distribution and promotion of the safety codes including the Outdoor Safety Code, Boating Safety and Water Code, the AdventureSmart website (www.adventuresmart.org.nz) and the Outdoor Intentions process.
- ▲ The project aims to increase safety awareness and behaviour change primarily among visitors to New Zealand but also to domestic travellers in an effective manner.
- ▲ MSC is managing this project on behalf of NZSAR Council and is collaborating with a large number of organisations within the tourism and land management sector.

Project Partners: NZSAR Council, Department of Conservation and Walking Access Committee

Supported by: Outdoors Intentions Steering Committee:
NZSAR Council, Department of Conservation, Walking Access Committee, LandSAR, Maritime NZ, New Zealand Police and Rescue Co-ordination Centre.

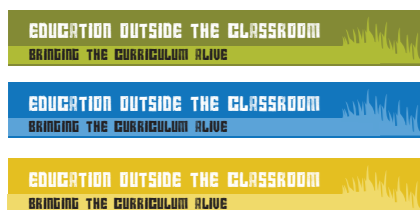
WHAKATŪPATO FIREARMS SAFETY PROGRAMME



- ▲ This successful project brings firearm safety training to rural communities. This includes recruiting community members to become MSC volunteer firearms instructors to ensure this programme is sustainable.
- ▲ After a successful pilot and this past year of delivery, it is hoped that this programme will be released nationwide within the next 5 years.

Project Partner: New Zealand Police and Iwi

EOTC RESOURCE PROJECT



- ▲ This project developed and facilitated workshops for teachers to identify resource and get the resources onto a website which makes them readily accessible to the education sector.
- ▲ MSC has provided governance, marketing and communications support.

Project Partners: Education Outdoors New Zealand (EONZ) and New Zealand Association of Environmental Education (NZAEE)

Supported by: SPARC and the Ministry of Education

AVALANCHE WEBSITE & FORECASTING



- ▲ This multi-faceted project brings together forecasting abilities and public communication to maximise both the safety message potential for those entering avalanche terrain and opportunities for increasing avalanche understanding and research via robust data gathering methods.

Project Partners: Ski Areas Association NZ (SAANZ) and Heliski Operators Group (HOG)

Supported by: Department of Labour (DoL), New Zealand's Commercial Ski areas and MetService

COLLABORATIONS IN BRIEF

- ▲ Water Safety New Zealand and MSC have combined to produce and distribute the River Safety DVD & companion handbook.
- ▲ Skills Active, New Zealand Outdoor Instructors Association (NZOIA) and MSC continue to work together to progress qualification and training opportunities to benefit the outdoor sector.
- ▲ MSC signed the Kia Tūtahi Relationship Accord between the Government and the community.
- ▲ SPARC is working with MSC to deliver internal governance capability and capacity development, stakeholder engagement, targeted organisation development and collaborative outdoor leader development.
- ▲ Walking Access Commission and MSC are exploring consistent signage and messages for walking access, outdoor safety information and boundary signage.
- ▲ Ministry of Youth Development, Ministry of Social Development and MSC are exploring support for community leader development.
- ▲ The New Zealand Recreation Association has joined the outdoors hub in MSC's Wellington office (along with Outdoors NZ, FMC and Visitor Solutions) leading to local and regional government opportunities and synergies.
- ▲ National Incident Database (NID): MSC provided database support, real time service provision and annual reporting (with our partners ACC, TIANZ, ONZ, EONZ, NZSSC, NZOIA).

FINANCIAL STATEMENTS

The summary financial statements for New Zealand Mountain Safety Council ("Council") have been prepared in accordance with Financial Reporting Standard FRS-43: Summary Financial Statements.

The Information contained in the summary financial statements has been extracted from the full financial statements authorised for issue by the Executive Committee on 26 October 2011.

The summary financial statements cannot be expected to provide and do not provide as complete an understanding as provided by the full financial statements. A copy of the full financial statements can be obtained by contacting the Council.

The full financial statements have been prepared in accordance with Generally Accepted Accounting Practice in New Zealand. A full description of the accounting policies adopted by the Council is provided in the full statements. The full financial statements have been audited and a qualified opinion has been expressed in the respect of the Council.

The presentation currency is New Zealand dollars (NZ\$)

BRANCH INCOME AND EXPENDITURE: Branch income and expenditure has been netted and is included in Other Income.

SUMMARY STATEMENT OF FINANCIAL PERFORMANCE FOR THE YEAR ENDED 30 JUNE 2011

	2011 \$	2010 \$
INCOME		
New Zealand Lottery Grants Board	1,031,000	1,056,999
New Zealand Police	407,202	355,865
Other Trusts	0	4,500
Other Income (includes Branch net income/loss)	310,892	501,683
	1,749,094	1,919,047
LESS OPERATING EXPENDITURE		
Operating Profit/ (Loss)	2,069	-71,063
Less Other Expenses Stock Written-off	15,559	0
Depreciation	55,615	77,131
NET LOSS FOR THE YEAR	-69,105	-148,194

SUMMARY STATEMENT OF MOVEMENTS IN EQUITY FOR THE YEAR ENDED 30 JUNE 2011

	2011 \$	2010 \$
Opening Equity	888,338	1,036,532
Net (Loss)/Profit	-69,105	-148,194
Closing Equity	819,233	888,338

SUMMARY STATEMENT OF FINANCIAL POSITION AS AT 30 JUNE 2011

	2011 \$	2010 \$
CURRENT ASSETS		
Cash	931,666	922,957
Other	200,775	170,076
TOTAL CURRENT ASSETS	1,132,441	1,093,033
TOTAL NON-CURRENT ASSETS	186,288	229,218
TOTAL ASSETS	1,318,729	1,322,251
TOTAL CURRENT LIABILITIES	499,495	425,418
TOTAL NON-CURRENT LIABILITIES	0	8,495
NET ASSETS REPRESENTED BY:		
Equity	819,233	888,338

THANK YOU!

to our funders for their generous support in 2010-2011

- ▲ Community Organisation Grants Scheme (COGS)
- ▲ Department of Conservation
- ▲ D Stevens
- ▲ Eastland Wood Council
- ▲ Gisborne Herald
- ▲ Guthrie Bowron
- ▲ GME
- ▲ Hunting and Fishing (Gisborne)
- ▲ Konica Minolta
- ▲ Larsen Sawmilling Ltd
- ▲ Lion Foundation
- ▲ New Zealand Lottery Grants Board
- ▲ New Zealand Police
- ▲ New Zealand Post
- ▲ New Zealand Safety
- ▲ NZSAR Council
- ▲ Perry Foundation
- ▲ Radio Ngati Porou
- ▲ SAANZ
- ▲ SPARC
- ▲ Stoney Creek
- ▲ Te Puka Tavern



OUTDOOR SAFETY
NEW ZEALAND MOUNTAIN
SAFETY COUNCIL

Mountain Safety House, 19 Tory St
PO Box 6027 Wellington, 6141
Tel 04 385 7162, Fax 04 385 7366
Email: info@mountainsafety.org.nz